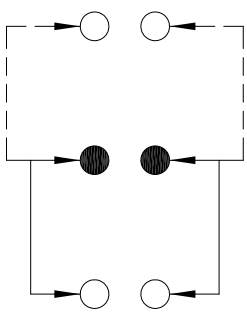
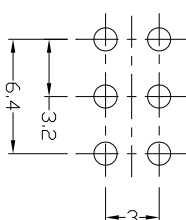
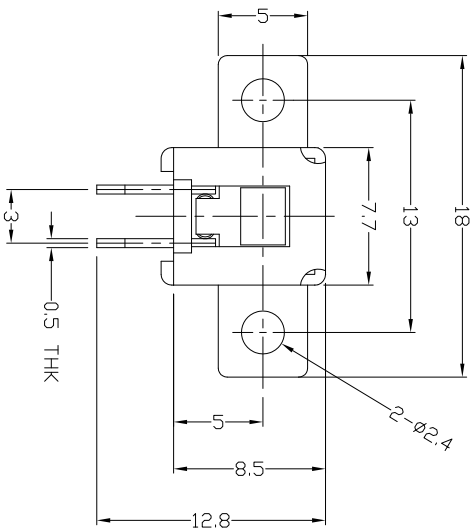
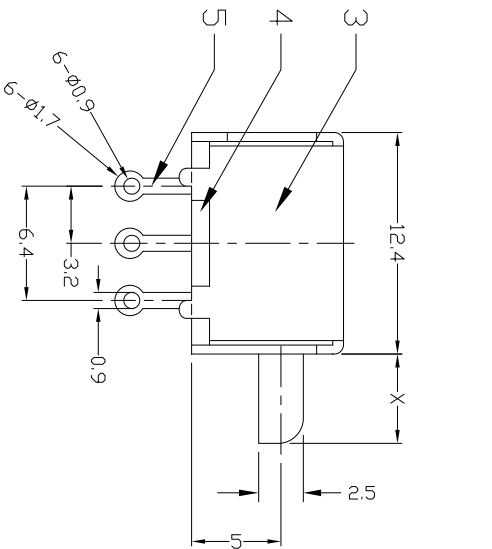
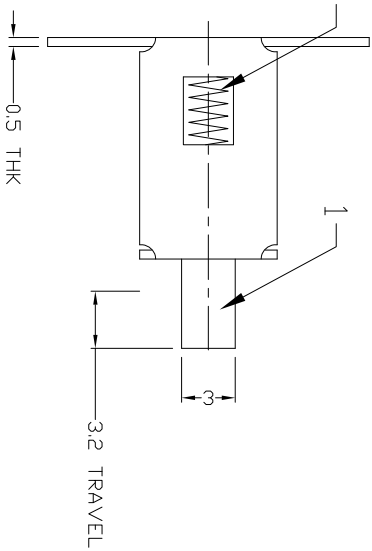




RoHS  
Compliant  
2002/95/EC

**DIMENSIONS**



P.C.B LAYOUT  
BOTTOM VIEW

CIRCUIT DIAGRAM

**ELECTRD-MECHANICAL CHARACTERISTICS**

Refer to additional specifications

RATING	DC50V 0.3A
CIRCUIT	2P2T
CONTACT RESISTANCE	100mΩ MAX.
TIMING	NON-SHORTING
OPERATING MODE	NON-LOCK
STROKE	FULL 3.2mm
OPERATING FORCE	100±30gf
OPERATING LIFE(cycles)	10,000

8																			
7	CONTACT CLIP	PBS STRIP	2	Ag PLATED	WITHIN 1.5mm±0.1mm	UNITS	mm												
6	TERMINAL	BRASS STRIP	6	Ag PLATED	OVER 1.5mm±0.2mm	MAT'L	SEE NOTE												
5	BASE	PHENOLIC RESIN	1	NATURAL		FINISH	SEE NOTE												
4	FRAME	STEEL STRIP	1	NI PLATED		Q'TY	SEE NOTE												
3	SPRING	STEEL WIRE	1	NATURAL		Q'TY	SEE NOTE												
2	KNDB	POM	1	BLACK		Q'TY	SEE NOTE												
1	PARTS	MATERIAL	Q'TY	FINISHING		APPD:													
					<b>DONGGUAN MINGJU ELECTRONICS CO.,LTD</b>					TITLE: PUSH SWITCH / HORIZONTAL					PART NO: PS-22F14N				
					THESE DRAWINGS AND SPECIFICATIONS ARE THE PROPERTY OF ACCURATE INNOTECH INC AND SHALL NOT BE REPRODUCED, COPIED OR TRANSMITTED IN ANY FORM OR BY ANY MEANS WITHOUT THE WRITTEN CONSENT OF ACCURATE INNOTECH INC.					DR: <i>Stacy</i> 2015/03/31					DWG NO: PS-22F14N				
					CHECKED: <i>Stacy</i> 2015/03/31					SCALE: 2:1					SHEET: 1/1				
										REV: A					CUSTOMER DRAWING				

REV.	ECN.	NO.	APPD.